

Brandi Hooker-Evans

RDH-ER, MHE

Inflammation Avenue

A Two-Way Street

Abstract

Agreeing that there is an oral systemic connection is easy; applying the evidence as a bi-directional highway in a way our patients can understand can be difficult. In this course we will take a deep dive into periodontal disease as it connects to other diseases.

Type of Program

Lecture, workshop, or keynote.

Platform

Live or virtual.

Category

Oral systemic link, clinical strategies, communication.

Target Audience

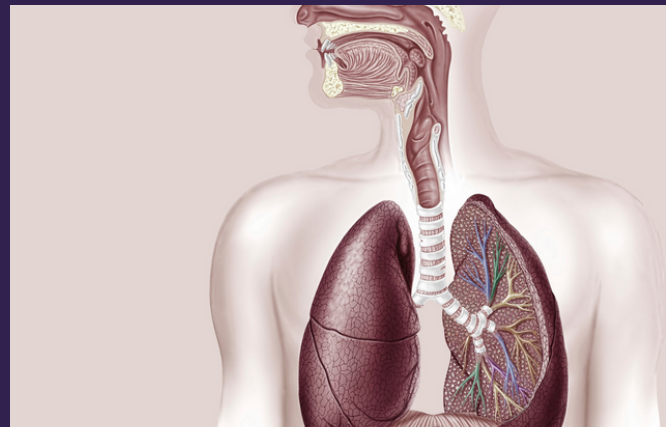
Dentists, hygienists, assistants.

Level

Intermediate, advanced.

Duration

Partial day, 1.5-4 hours.



Learning Objectives

Solidify knowledge of the interconnected nature of inflammatory diseases.

Identify early signs of autoimmune disease in the oral cavity.

Gain confidence discussing medical history findings with patients.

Expand communication and motivational skills in helping patients journey to health.

Stellar Outcomes